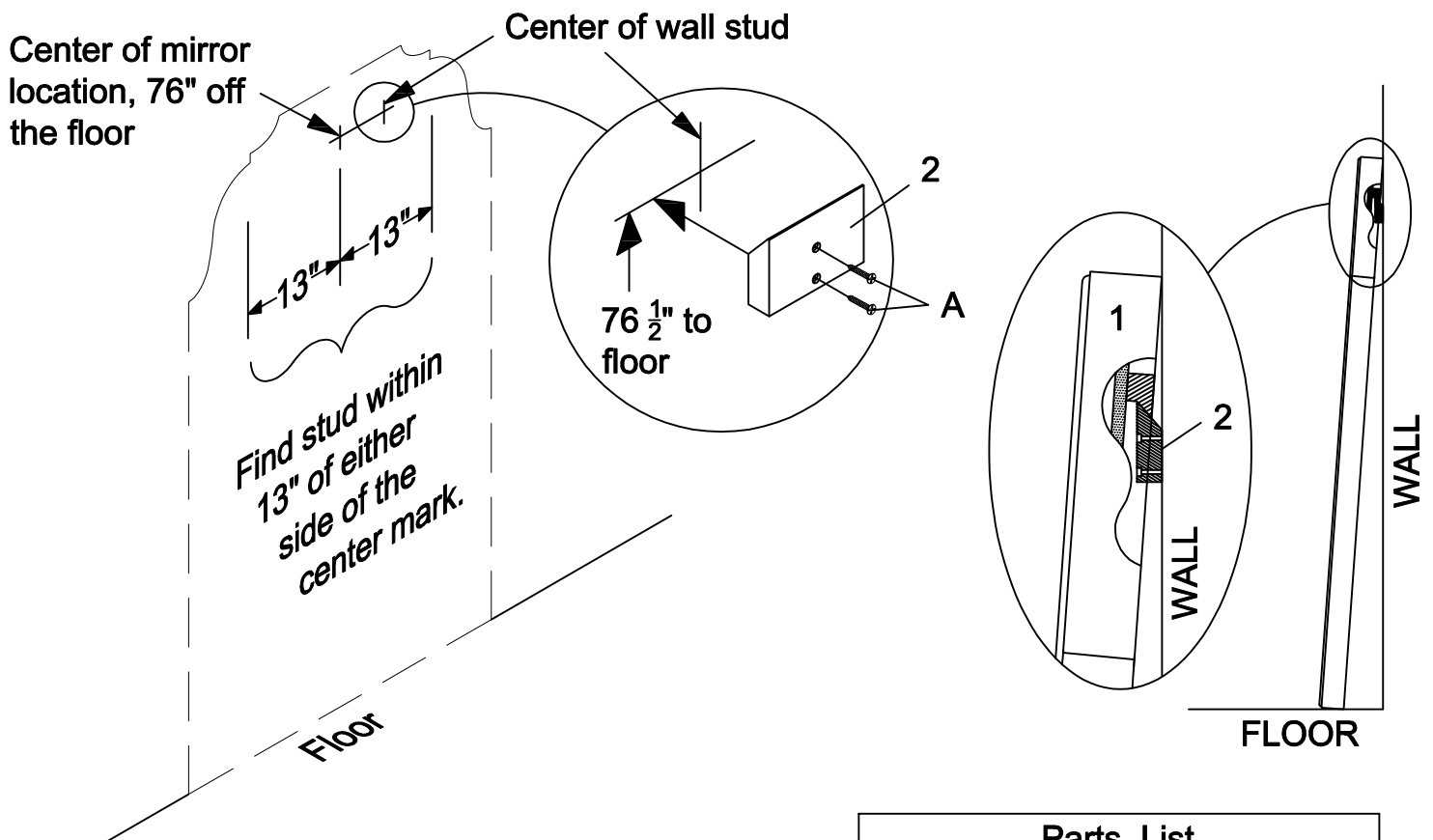


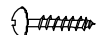
Thank you for purchasing this quality product from A.R.T. Furniture. Be sure to check all packing material for parts which may have come loose inside the carton during shipment. Identify and count all parts and compare with the parts list below.



**Note:** Some furniture is heavy, it is recommended that two people assembly this item to avoid injury or damage.

The Chesapeake Salon mirror is designed to be supported by the floor. It should not be hung on the wall using the materials provided. The wall cleat provide is only meant to keep the mirror from accidentally falling forward. The mirror must be installed using the wall cleat included with the mirror.

1. Locate the center of the desired location of the mirror and mark the wall 76  $\frac{1}{2}$ " up from the floor.
2. Find a stud within 13" either side of the mark
3. Use a level to mark a 6" line, centered on the stud and 76  $\frac{1}{2}$ " off the floor.
4. Place the wall cleat (2) on the wall with the top of the cleat flush to the line and the screw holes aligned with the wall stud.
5. Secure the wall cleat (2) to the wall (stud) using the wood screws (A).
6. Place the mirror (1) against the wall and slide the bottom out away from the wall until the wall cleat (2) engages the cleat on the back of the mirror.
7. The bottom of the mirror should be approximately 6 inches from the wall.



No.	Hardware List	Qt.
A	 #8 x 2 $\frac{1}{4}$ " Wood Screw	2

Parts List			
1		Mirror	1
2		Wall Cleat	1